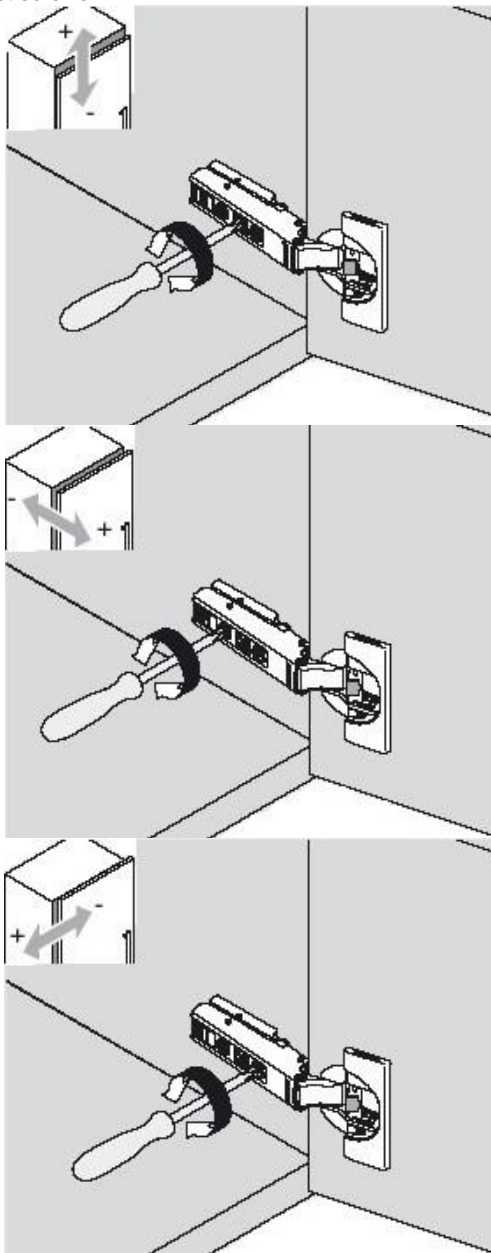


Door Alignment:

The Blum hinge offers 3-dimensional adjustment, allowing for precision on-site installation adjustment of the HEIGHT, DEPTH and SIDE adjustments. The adjustment technology is integrated into the hinge and base-plate and allows for independent screw action.

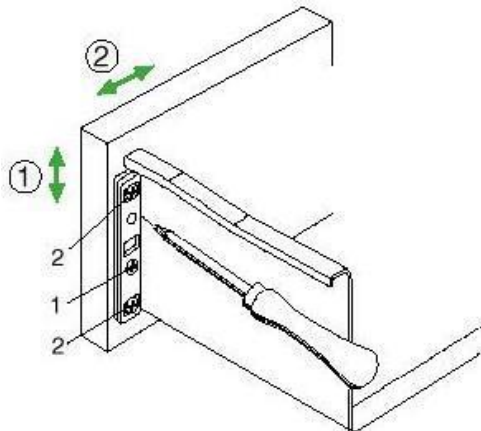
Use #2 POZI drive screwdriver supplied by Laurysen (alternate - Philips screwdriver or star screwdriver) to adjust screws.



Drawer Alignment:

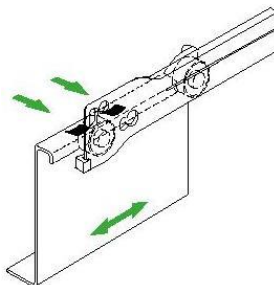
The Grass drawer box offers 2-dimensional adjustment, allowing for precision on-site installation adjustment.

1. Height Adjustment: Loosen screws #2 slightly. Adjust screw #1 (adjustment +/- 2mm). Tighten screws.
2. Side adjustment: Loosen screws #2 slightly. Adjust front to required position (adjustment range +/- 1.5mm). Tighten screws #2.
3. Angle Correction: Loosen top screw or bottom screw #2 according to your needs. Push an angle correction wedge in between, tighten screws #2 and tear off wedge.
4. Angle correction +/-1mm.
5. After adjusting front panel, mount fixing screw.



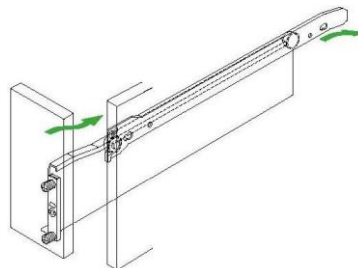
Double Stop

The double stop prevents the drawer from falling out while being extended. In addition, the drawer can be locked in the open position.



Self-Closing

The distinctive feature of all Grass drawer slides. From 2 5/8" out, the drawer closes quietly and smoothly. Drawers closed with force will not bounce back.



KITCHENS

KITCHENS | VANITIES | CLOSETS

Laurysen Warranty Card

Since 1970, LAURYSEN KITCHENS LTD has been manufacturing kitchen and bathroom cabinetry, wall units, residential millwork and closet organizers.

We have built our reputation on quality, craftsmanship and customer service. We use only top quality material and modern manufacturing equipment.

Contained in this pamphlet are tips on how to care for and maintain your Laurysen cabinetry to give you years of lasting beauty and enjoyment.

Please refer to your work order number for any future inquiries you may have:

Customer Name:

Date of Purchase:

Invoice #:

Dealer/Designer:

Installer:

Door Style:

Colour:

Word Order Number:

Thank you for choosing Laurysen Kitchens Ltd.
www.laurysenkitchens.com

If all trees were identical ... all wood would look alike but no two pieces of wood are exactly alike, even from the same tree. Due to the variances in natural colour and grain, each piece of wood will react differently to the finishing materials used. Closed grained woods absorb less and will vary in colour from more opened grained pieces of the very same wood. You will notice that the fine woods used in Laurysen Kitchens Ltd. will vary in grain and colour even in the same door. These variations are the distinguishing beauty marks of quality wood.

At LAURYSEN KITCHENS LTD we are committed to producing the highest quality manufactured products possible. We care about the integrity of our products, and your enjoyment of them long after the initial installation has been completed. We feel it is beneficial for you, the customer, to be aware of the following "natural" limitations, since your continued satisfaction with the Laurysen Kitchens products is our first priority.

Differences and variations in wood colour and wood grain are caused by the natural varying growth of trees, resulting in distinctive characteristics. In turn, these natural variations may cause slight colour differences dependent upon their acceptance of the finish. Although uniformity is enhanced by the skilled applications of finishes, and toners where applicable, "Nature" still has the last word - and this is the natural beauty of wood.

Translucent Finish

This is particularly true for products finished in LAURYSEN KITCHENS LTD Translucent wood finish. There is no "masking" in Translucent as compared to other LAURYSEN KITCHENS LTD finishes and stains. Therefore, any natural variation in grain or wood colour in woods produced in this finish will remain noticeable even after the finishing process has been completed.

Opaque / Solid Colour Finishes

Solid colour finishes (as opposed to grain-enhancing wood stains) are intended to "cloak" the wood substrate on which they are applied. Although the best furniture grade lumber, kiln-dried to exacting standards, is used for all LAURYSEN KITCHENS LTD wood products (birch, cherry, hickory, maple, oak, pine), no wood product is impervious to some expansion and contraction caused by varying levels of temperatures and humidity. If humidity levels in the home are too high, the added moisture may cause cabinet components, doors and drawer fronts to swell (summer). If too low, there is a tendency to dry these items out, causing shrinkage (winter).

Wood is a living natural product, which is affected by extreme highs or lows in humidity and temperature levels. Extreme fluctuations of these may cause joints in frame door styles and construction joints in cabinets to move, resulting in "hair-line" cracks. These cracks are more apparent in solid colour finishes than in regular wood stains, but are not cause for structural failure.

LAURYSEN KITCHENS LTD continually strives to provide our customers with the best wood products available; our supplier has prepared the following wood species-grading guide to aid in the proper selection of wood species and wood grade.

Due to wood's natural uniqueness and differences LAURYSSEN KITCHENS LTD cannot be responsible for the colour, tone and graining variations within a complete kitchen. Each piece of wood taken from even the same tree will be different: colour, grain patterns, and strength may be somewhat similar, but never the same. It is exactly this diversity, which has made wood the choice of countless generations due to its warmth, security, touch, scent and appearance.

To alleviate any future perceived inconsistency in the finished wood in any stain colour or species, please read the following:

Flat Panel Doors:

The colour of the veneered plywood center panel may not match the solid wood framing and may not take stain or finish in a similar manner.

Center Panels:

Heartwood and / or sapwood may be present in shaped areas, which are considered to be acceptable.

Finishes:

The use of certain finishing processes may on some species (birch, cherry and maple) create a blotching effect. This is not a wood defect. Replacement doors will be at the customer's expense and cannot be guaranteed to be acceptable. In the event that a door should be deemed to require "re-finishing", Laurysen Kitchens will only re-finish the face (not the back) to eliminate the possibility of further damage.

Grading:

All grading is determined by the "front" of the door.

Bamboo:

Cross Plywood is a type of bamboo construction in which a solid bamboo core is placed perpendicular to solid bamboo top and bottom layers for extra stability. Caramelized is the process of pressure-heating bamboo culms or slats to "brown" the sugar compounds naturally present in the plant, yielding the warm, amber Teragren Caramelized color without using stains or dyes.

Birch – White - Regular:

Close-grained wood with white creamy sapwood and pale brown heartwood. A mixture of sapwood and heartwood is permitted in this grade. Natural characteristics ordinarily found in the species such as fleck, vine marks and natural streaks are acceptable. This grade is recommended for medium to dark finishes.

Birch – White - Select:

Same characteristics as above, but this grade is selected for uniform colour match. Shaped areas (raised panel, moulding, and edge profile) may contain some heartwood. Natural characteristics ordinarily found in the species such as fleck, vine marks and mineral streaks shall be limited in

quantity and size. This grade is recommended for light to medium finishes.

Cherry - Select:

A close-grained wood with reddish brown to deep red heartwood. Sapwood is white to light red in colour. This grade is selected for uniform colour match (some sapwood and heartwood is permitted in this grade). Shaped areas (raised panel, mouldings, edge profile) may contain sapwood. Natural characteristics ordinarily found in the species such as brown flecks, gum pockets and mineral streaks are acceptable and shall be limited in quantity and size. Please note that due to cherry's sensitivity to ultraviolet light, it will darken over time if you use a light finish.

Hickory:

A dense, close-grained wood with the sapwood being white and the heartwood reddish brown. This grade permits any amount of sapwood or heartwood on the products. Burls and mineral streaks are acceptable. A good selection for the individual who enjoys nature's diversity and beauty.

Maple – Hard – Select:

A close-grained wood with white sapwood and light reddish brown heartwood. This grade is selected for uniform colour match (some sapwood and heartwood is permitted in this grade). Shaped areas (raised panel, moulding, and edge profile) may contain some heartwood or mineral streak. Natural characteristics ordinarily found in the species such as burls, pin knots, mineral streaks, fleck or vine marks shall be limited in quantity and size.

Oak – Red –Select:

An open-grained wood with varying sapwood colour (light grey to white pale brown) and pinkish red coloured heartwood. This grade is selected for uniform colour match (some sapwood and heartwood is permitted in this grade). Shaped areas (raised panel, moulding, and edge profile) may contain some heartwood. Natural characteristics ordinarily found in the species such as burls, pin knots and mineral streaks are permitted and shall be limited in quantity and size.

Pine – Knotty:

Eastern white pine consisting of sound red or black knots. Cracks in knots are permitted and will be filled and sanded smooth. Some blue stain is allowed within this grade.

Reconstituted Veneers:

A reconstituted veneer is a man-made product using a wood commonly called "obeche". These veneers are systematically dyed to mimic the look of their real wood counterparts. The beauty of this type of veneer is its outstanding color and grain consistency from sheet to sheet. Reconstituted wood veneers are defect-free and identical from one sheet to another when purchased together, making them a great option for projects where consistency is critical.

Warranty:

Laurysen Kitchens Ltd. provides a limited 10 year warranty on materials and workmanship. The availability of material used is subject to change without notice to ensure Laurysen Kitchens' high quality.

We have based our reputation on a quality product and excellent service. We stand behind all our products.

Finishes:

1 year Warranty of Painted MDF Doors.

5 year limited warranty. All our lacquer finishes contain an ultra-violet inhibitor which prevents yellowing of the finish. However, this inhibitor does not prevent the wood from naturally aging. Replacement door will not match in colour due to stain/finish die lots and ageing.

Cabinets:

10 year limited warranty on materials and workmanship.

Drawer Slides & Hinges:

Life-time warranty, should you have a defective hinge or drawer slide after 5 years please contact the supplier directly.

BLUM	1-800-670-9254
GRASS	1-800-461-4975
HETTICH	1-800-663-1390
SALICE	1-800-361-1045

Doors:

5 year limited warranty. 1 year warranty against warping under 42" in height. Industry standard allowance is 1/8" over 42"

Post formed Counter tops: Effective 2011

5 year limited warranty. Please note: You have 24 hours after installation to report any surface scratches, bubbles, etc.

Thermo-foil Doors: Effective 2011

10 year limited warranty.

Installation:

2 year limited warranty. Please note that any warranty claim filed 2 years after original date of installation will carry a labour charge to perform warranty work.

Cleaning:

For regular cleaning, wipe doors with a damp cloth (either laminate or wood cabinets) We advise not to use strong detergents, abrasive cleaners or self polishing waxes on cabinet surfaces as they may cause permanent damage.

For major cleaning, use warm soapy water and damp cloth to wipe doors. Do not use oil to clean surfaces (wood surfaces are lacquered and oils will not penetrate)

Nicks and scratches are unavoidable in today's kitchens and bathrooms. Putty sticks in matching colours are available from us upon request at a nominal cost. The interior of all our cabinets are a high grade melamine finish. Dishes should be dry when being put away in cabinets, prolonged exposure to water may cause severe spotting and or lifting. A damp cloth is all you need to maintain a clean interior.

Post-formed Counter tops:

Standard post-formed tops are comprised of 5/8" particle board with plastic laminate adhered to the surface as a protective coating and decorative finish.

- Abrasive cleaners or steel wool should not be used to clean the laminate surface.
- Bleach should never be allowed to rest for any extended period of time on the laminate surface. Light spots will form and surface will appear splotchy.
- Do not use laminate surface as a cutting board. Damage caused by this type of action will be permanent.
- Use insulating pads with hot pots and electrical appliances to avoid burn marks and heat bubbles.
- Seams/joints should be kept dry as much as possible. Excess water may cause de-laminating of plastic laminate and/or swelling of core. Water damage is not a manufacturer's defect and is not covered by the warranty.
- For stubborn stains use a damp sponge with a liquid cleanser (non-abrasive), and rub gently in circular motions. Be sure to rinse thoroughly with clean water and dry properly.
- Tops may shift slightly due to house settlement. When this occurs, simply cover the gap with additional silicone caulking.

Granite:

Granite is a natural stone formed in the earth from liquid and gas minerals. Every piece is one of a kind, created by nature. Seams are visible.

Everyday cleaning can be done with a clean cloth and water. A soapy solution made with dishwashing soap should be used. Do not use abrasive cleaners or ammonia based sprays. Extended use of these products can etch or dull the surface of the granite. You also need to be careful with acidic foods and cleaners to avoid etching the stone.

It is not necessary to reapply a stone sealer every year. However, there are various high quality maintenance products available specifically for granite. Should stains occur it should be addressed by a professional.

Solid Surface: (Man Made)

Manufactured product of acrylic and/or polyester resin with aluminum tri-hydrates. It is available in a wide array of colours with inconspicuous seams once assembled.

Clean with soap and water. Stains can be removed with a Scotch-Brite pad and abrasive cleaner. Scratches, burns

and stains may be repaired or removed with sandpaper and refinishing of the surface. For tough stains, deep scratches etc. please contact a professional.